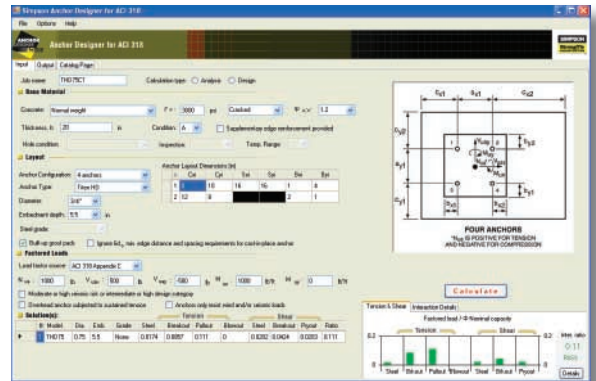


# Anchor Selection Software

## Anchor Designer Software™ ACI 318



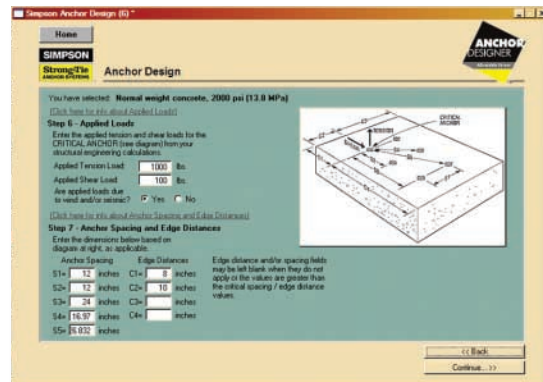
Anchor Designer Software ACI 318 analyzes and suggests anchor solutions using the ACI 318, Appendix D Strength Design methodology (or CAN/CSA A23.3 Annex D Limit States Design methodology). It provides cracked and uncracked-concrete anchor solutions for numerous Simpson Strong-Tie Anchor Systems® mechanical and adhesive anchors. With its easy to use graphical interface, Anchor Designer Software ACI 318 eliminates the need for tedious calculations by hand that would otherwise be necessary to determine cracked concrete anchor solutions.



## Anchor Designer™ for Allowable Stress Design



For applications where ACI 318 doesn't apply, we still have the original **Anchor Designer for Allowable Stress Design Software**. We'll continue to keep this program updated with the latest technical information so it can continue to be a valuable tool for anchor specification.



Both programs make it easy to select the correct anchorage for your application and both are available for FREE download from [www.simpsonanchors.com](http://www.simpsonanchors.com).

**In the Specs – On the Job – At Your Service™**

**Home Office**  
5956 W. Las Positas Blvd.  
Pleasanton, CA 94588  
FAX: 925/847-1603

**Northwest U.S.A.**  
5151 S. Airport Way  
Stockton, CA 95206  
FAX: 209/234-3868

**Southwest U.S.A.**  
260 N. Palm Street  
Brea, CA 92821  
FAX: 714/871-9167

**Northeast U.S.A.**  
2600 International Street  
Columbus, OH 43228  
FAX: 614/876-0636

**Southeast U.S.A.**  
2221 Country Lane  
McKinney, TX 75069  
FAX: 972/542-5379

**Eastern Canada**  
5 Kenview Blvd.  
Brampton, ON L6T 5G5  
FAX: 905/458-7274

**Western Canada**  
11476 Kingston St.  
Maple Ridge, BC V2X 0Y5  
FAX: 604/465-0297

**Warehouses & Manufacturing:**  
Eagan, MN; Enfield, CT; Gallatin, TN;  
High Point, NC; Jacksonville, FL; Jessup, MD;  
Kent, WA; Langley, BC; Ontario, CA